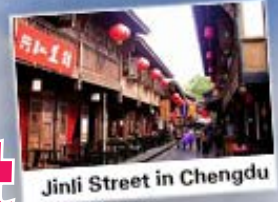


Chengdu & Tibet

Chengdu, Mt. Leshan, Lhasa, Shigatse and Lanzhou



AIR CHINA
中国國際航空

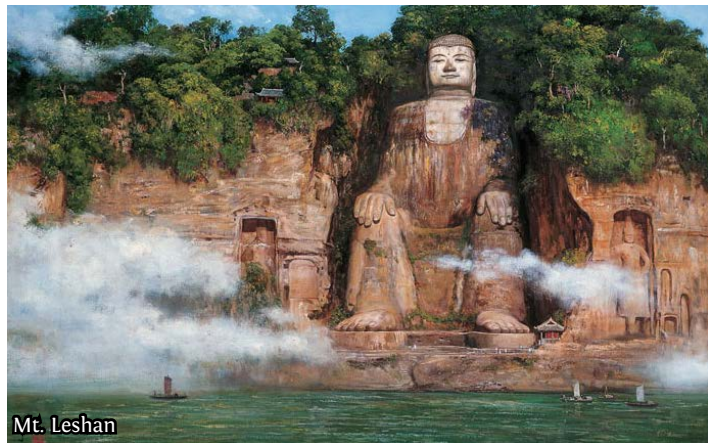
\$2999

13 Days

Including airfare & airport taxes

2017 Dep.
SYDNEY

8 May, 11 Sep



Prices:

\$2999 Adult; \$2899/Child (2-11 years old)
Land Only: \$2699 (starts in Chengdu ends in Lanzhou)
Single Room Supplement: A\$630 Air Ticket Extension: from \$150 depends on seat availability

Price includes:

Economy class return airfare from Australia to China with Air China
Airport taxes: A\$320 Adult) A\$230 (Child)
Full accommodations at 4star hotel on twin sharing basis
All transfers, meals and sightseeing as per itinerary and English-speaking guide

Price excludes:

China visa A\$150 single entry Australian passport holder
Personal expenses
Tipping (suggested \$10 per day per person)
Travel insurance;

This tour is based on minimum 10 passengers for departure.



澳洲 **中国旅行社** 有限公司
CHINA TRAVEL SERVICE (AUST) PTY.LTD.
Shop 2, 743 George Street, Sydney NSW 2000
Tel: (02)8202 9822, Fax: 02-9281 8855
Email: ctstour@chinatravel.com.au
www.chinatravel.com.au

Airport taxes and fuel surcharges are subject to change without prior notice

Itinerary

Day 01 Sydney/Chengdu

Fly from Australia to Chengdu via CA430(1335/2235), which is called 'the Land of Abundance'. Upon arrival in Chengdu, you will be greeted by our CTS Guide and transferred to your hotel.

Hotel: Tianfu Sunshine Hotel (4*) or similar

Day 02 Chengdu(B/L/D)

Highlight today is the renowned Panda Breeding and Research Centre in Chengdu. The giant pandas are not only a Chinese national treasure but are also beloved by people the world over. They are found only in Sichuan, Shaanxi and Gansu provinces. In total there are fewer than 1000, of which 80% are distributed within the territory of Sichuan province. Therefore, when visitors from home and abroad come to Chengdu, Sichuan Province one of their main objectives will be to see the giant pandas for themselves. Afterwards, we visit a local tea house and the ancient Jinli Street in Chengdu, which was in ancient time one of the busiest commercial boulevards of the Kingdom of Shu. This evening witness the traditional local show of 'Changing Face'.

Hotel: Tianfu Sunshine Hotel (4*) or similar

Day 03 Chengdu(B/L/D)

Today, drive to Mt. Leshan. Take a boat to visit the marvelous Giant Buddha which is dates back 1,200 years. On the way back, visit Huanglongsi Old Town.

Hotel: Tianfu Sunshine Hotel (4*) or similar

Day 04 Chengdu/Lhasa(B/L/D)

Free at leisure till transfer to the airport and fly to Lhasa via CA4112 (1300/1500). Upon arrival, you will be greeted and transfer to your hotel. This afternoon you will relax in order to acclimatize to the altitude.

Hotel: Minzu Hotel (4*) or similar

Day 05 Lhasa(B/L/D)

Today's excursion features the renovated Potala Palace, which rises majestically from the face of sacred Putuo Hill and listed as a world heritage site, the Bakhor, the famous bazaar at Eight-Corner Street, and 7th century Jokhang Monastery, one of the holiest shrines.

Hotel: Minzu Hotel (4*) or similar

Day 06 Lhasa(B/L/D)

Visit the Norbulingka Palace, which was the Summer Palace of Tibetan Kings and Sera Monastery. In the afternoon, visit the cliff-top Drepung Monastery.

Hotel: Minzu Hotel (4*) or similar

Day 07 Lhasa-Shigatse (B/L/D)

Today, drive from Lhasa to Shigatse. One the way, visit the holy Yamdrok-Tso Lake en route. Upon arrival in Shigatse, check in to your hotel.

Hotel: Tashi Choeta Hotel (4*) or similar

Day 08 Shigatse-Gyantse-Lhasa (B/L/D)

Visit Tashilumpo Monastery and its surroundings, including the six-story bronze Buddha statue and the Maitreya Buddha statue made from 614 pounds of pure gold. In the afternoon drive back to Lhasa. On the way, visit the Pelkhor Chode Monastery in Gyantse, known for its Kumbum (10,000 images) Stupa.

Hotel: Minzu Hotel (4*) or similar

Day 09 Lhasa-Lanzhou(B)

Free in the morning for the last glimpse of the holy city. Transfer to the railway station and take the train T28 (1320/1426+1) or similar to Lanzhou. Overnight on the train.

Hotel: On the train

Day 10 Lanzhou

Arrive in Lanzhou, an important stop along the Silk Road and has a history of over 2,000 years. It has been important for thousands of years because of the Hexi Corridor, or "Corridor West of the Yellow River", where early Chinese civilization began. You will be greeted and take a short tour of Lanzhou City before transfer to the hotel for a rest. Dinner is on your own.

Hotel: Legend Hotel (4*) or similar

Day 11 Lanzhou (B/L/D)

Today, take a full day tour to Bingling Grottos. Bingling Grottoes is one of China's big ancient Buddhist temple complexes with an array of statuary and frescoes dating from about AD 420 to the Ming Dynasty. The statues date from various dynastic eras and show the differing cultures, clothing and physical features of the worshipped gods. The earliest temples are at the highest elevation and have characteristic Indian-style features and artistic style. Tonight you will sample the famous "Hand Stretched Noodles Banquet".

Hotel: Legend Hotel (4*) or similar

Day 12 Lanzhou/Chengdu/Sydney(B)

Free at leisure till transfer to the airport and fly to Chengdu via CA4208 (1705/1840). Upon arrival in Chengdu, connect CA429 (2255/1135+1) back to Sydney.

Day 13 Sydney

Arrive in Sydney at 11:35am.

